



Portman Place, London, E2

BUTLER & STAG



Guide Price £475,000 - £500,000
Situated on the ground and first floor of this low rise purpose built development is this 1030 Sq/Ft split level, three bedroom garden maisonette. Located off Globe Road in Bethnal Green, a thriving, cultural creative hub comprising independent cafes, bars and warehouse pop-up art galleries, this energetic neighbourhood will be a truly inspiring place to live. Ideal for both budding entrepreneurs and anyone looking to embrace the creative vibe of this wonderful location.



Leasehold

- Duplex Garden Maisonette
- Lavish Sized Reception Room
- Kitchen Diner
- Three Double Sized Bedrooms
- Gas Central Heating
- 1030 Sq/ft Internal Living Space
- Bethnal Green Tube Station Close By
- Down Stairs Cloakroom
- Chain Free

Accessed from a quiet residential close, the accommodation comprises a lavishly sized living space which is bright and spacious with direct access to a private court yard garden. There is a separate kitchen which has ample space for dining and a ground floor cloakroom. On the first floor there are three well-proportioned bedrooms and a stylish family sized bathroom.

The award winning Victoria Park one of east London's most spacious alfresco-eating spots, with two lakes, a boating pond, playgrounds, and a scattering of other Instagram-worthy delights are all but a moments' walk away.

Portman Place is in close proximity to both Bethnal Green (Central Line) and Stepney Green (District and Hammersmith & City Lines) tube stations and is part of a rapidly emerging area within East London that offers easy access into Canary Wharf as well as the City and social hotspots such as Bethnal Green, Shoreditch, Brick Lane, Columbia Road and Spitalfields.

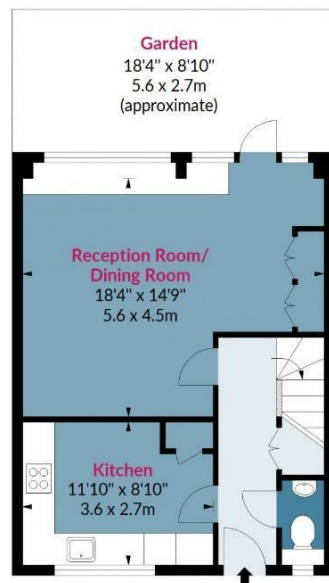




Portman Place, E2

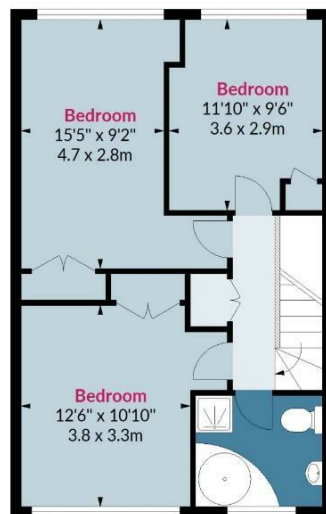
Approx. Gross Internal Area 1030 Sq Ft - 95.69 Sq M

BUTLER & STAG



Ground Floor

Floor Area 466 Sq Ft - 43.29 Sq M



First Floor

Floor Area 564 Sq Ft - 52.40 Sq M

Floor plan is for illustrative purposes only and is not to scale. Every attempt has been made to ensure the accuracy of the floor plan shown, however all measurements, fixtures, fittings and data shown are an approximate interpretation for illustrative purposes only.
lpaplus.com

BUTLER & STAG

☎ 020 8102 1236

🏠 508 Roman Road, Bow, London, E3 5LU

✉ bow@butlerandstag.com

www.butlerandstag.uk

IMPORTANT NOTICE - These particulars have been prepared in good faith and they are not intended to constitute part of an offer or contract. We have not performed a structural survey on this property and the services, appliances and specific fittings have not been tested. All photographs, measurements, floor plans and distances referred to are given as a guide and should not be relied upon.